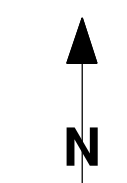


Sanierung Eichstrasse

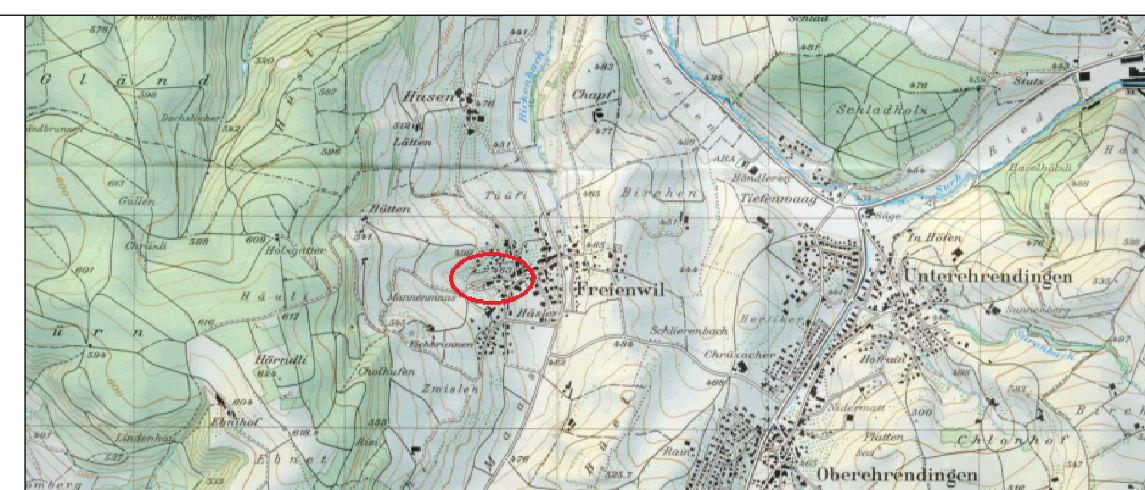
Längenprofil 1:500/50

Bauprojekt

Übersicht:



1:50000



Ingenieurbüro Senn AG
Planung & Tiefbau · 5415 Obersiggenthal
Telefon: 056 / 296 30 00
Fax: 056 / 296 30 03
Homepage: www.ingsenn.ch
E-Mail: ingsenn@ingsenn.ch

**Raumentwicklung
Baupolizei
Vermessung
Umweltechnik
Tiefbau
Eisenbeton**

Gez.: K. Wunderlin/L.Lüthi Plan Nr.: 21-105.2-1
Gep.: T. Hunn Datum: Juli 2018
Format: 840 mm x 800 mm Änderung: Mai 2019

Gewässerschutzbereich ÜB

Dichtigkeitsprüfung

Prüfdruck P = 0.5 bar, bezogen auf die tiefste Stelle im Kanal.

Zulässiger Verlust:

0.20 l/Std./m² benetzte Fläche

Bettungsprofil U4 (nach SIA 190)

km 0+014.190
R = 500.000 m
T = 3.500 m
f = 0.012 m
TS = 482.277 m

km 0+000.000
TS = 483.668 m

km 0+027.889
R = -500.000 m
T = 3.000 m
f = -0.009 m
TS = 481.127 m

55a
D = 481.58
E = 479.94
S = 479.92
I = 1.66

55
D = 479.38
E = 477.32
S = 477.28
I = 2.10

54a
D = 477.27
S = 475.20
I = 2.07

km 0+083.764
R = 250.000 m
T = 6.250 m
f = 0.078 m
TS = 475.763 m

km 0+109.437
R = -250.000 m
T = 7.500 m
f = -0.113 m
TS = 474.582 m

54
D = 473.78
E = 471.48
S = 471.51
A = 471.28
S = 471.38
I = 2.50

km 0+137.499
R = 350.000 m
T = 9.275 m
f = 0.123 m
TS = 471.607 m

km 0+178.748
R = -250.000 m
T = 2.768 m
f = -0.015 m
TS = 468.706 m

km 0+164.640
R = 250.000 m
T = 3.643 m
f = 0.027 m
TS = 469.663 m

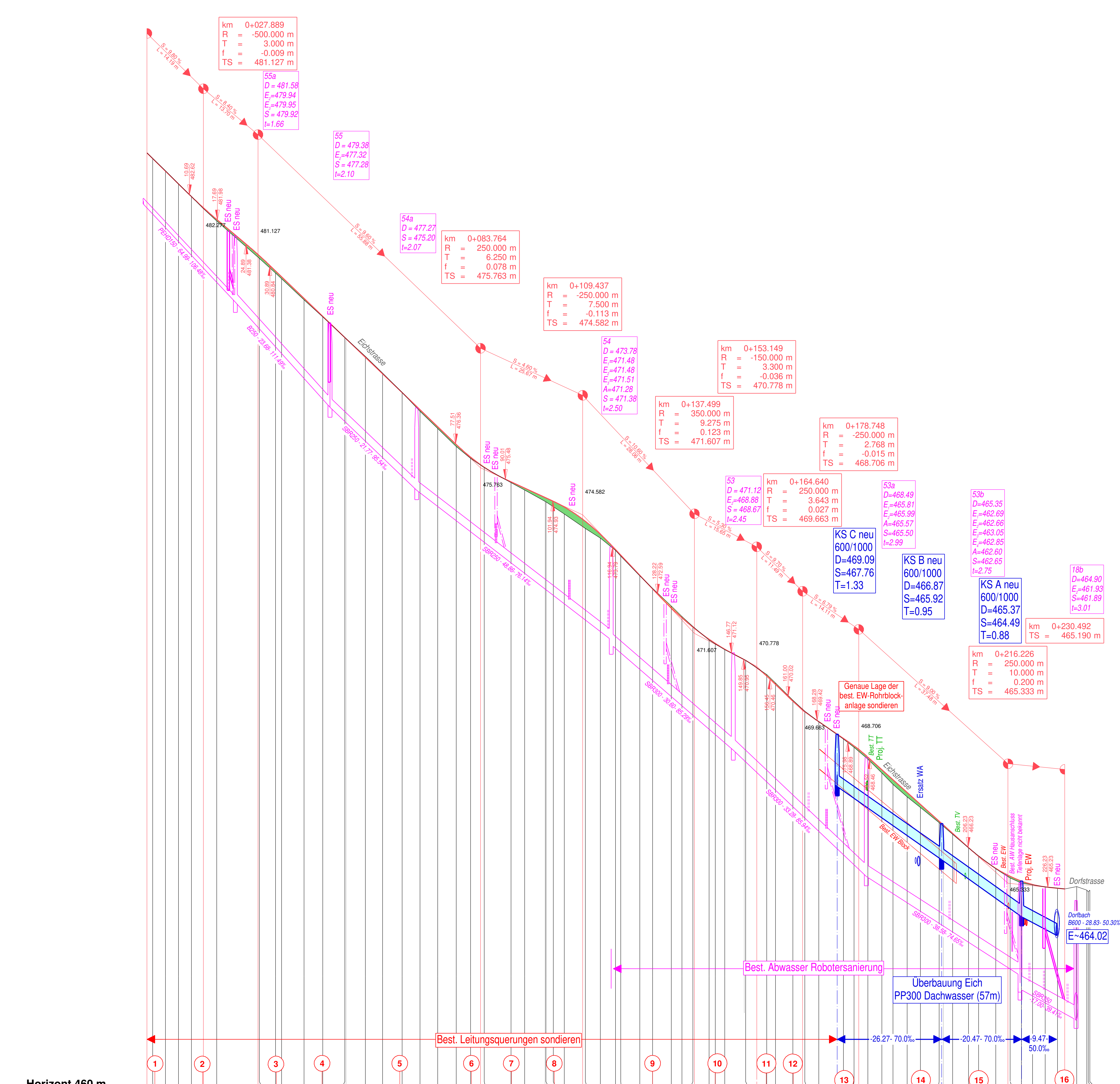
KS C neu
600/1000
D=469.09
S=467.76
T=1.33

KS B neu
600/1000
D=466.87
S=465.92
T=0.95

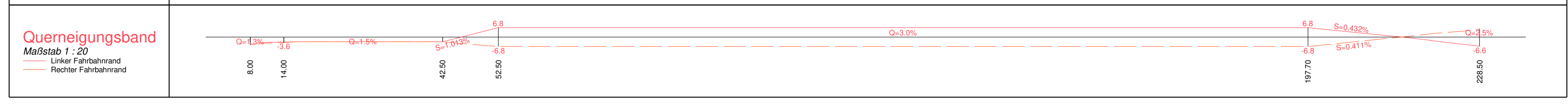
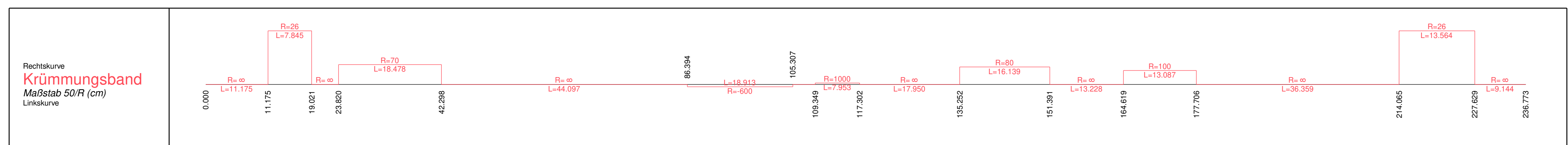
KS A neu
600/1000
D=465.37
S=464.49
T=0.88

18b
D=464.90
E=461.93
S=461.89
I=3.01

km 0+230.492
R = 250.000 m
T = 10.000 m
f = 0.200 m
TS = 465.333 m



Km	0+000	0+050	0+100	0+150	0+200
Terrainhöhe	483.57	482.22	481.96	479.95	478.78
Station	0.00	7.98	15.96	23.94	31.92
Projekthöhe	483.57	482.22	481.96	479.95	478.78



Planinformationen		
Projekt Nr.	21-105_LV95	Freigegeben
CAD Version	RIB iTWO civil 2019	Planzustand:
Format	A3	Skala
ICD-Plan	2-001a.tcd	Bemerkung